



# HAWK HEADLINES

November 17, 2023

## Principal's Message

Dear Hutton Families,

As the autumn continues to unfold, I'm excited to share updates on our November activities. November 13th was National Kindness Day. Thank you to all the Hutton families that came to decorate the sidewalks with positive messages for our students and staff. We're dedicated to celebrating kindness and fostering a culture of gratitude within our school community. We invite the Hutton community to join us in recognizing the importance of small acts of kindness and their positive impact on individuals and communities. Our ongoing discussions emphasize the value of empathy and inclusivity, and your participation in reinforcing these principles at home is vital as we work together to create an environment of kindness and appreciation.

In the spirit of gratitude, we'll be encouraging expressions of thanks throughout the month. This provides a reflective space for appreciating the many blessings in our lives. Your partnership in instilling these values at home is invaluable, and we anticipate the collective spirit of kindness and gratitude flourishing throughout our school.

Wishing you and your families a wonderful November!

**LaTonya Simmons**  
Principal



## Upcoming Events

**November 17**

Fall Harvest Parties

**November 21, 23, 28 &  
30**

**December 5, 7, 12, 14,  
19 & 21**

Art-Enjoy the Process

**November 20**

Screenagers

Lewis & Clark HS

5:30-7 PM

**November 20, 27**

**December 4, 11, & 18**

4/5 Choir Practice

**November 22-24**

No School

Thanksgiving Break

**November 28**

PTG Meeting

Library

6:30 PM

[Zoom Link](#)

**December 4-9**

Missoula Children's  
Theater

**December 12**

Hearing and Vision  
Screening



*Land Acknowledgement: We acknowledge that we are on the unceded lands of the Spokane Tribe. The Spokane people shared this place with other tribes through their relations, resources, history, trade, and ceremony. We thank the caretakers of this land, who lived, and continue to live here Since Time Immemorial. This land holds the knowledge, culture, and spirit of "The People of the River."*



## Introducing: TEDDY

We am excited to share some wonderful news with you all. We are potentially welcoming a new, four-legged member to our Hutton family – Teddy, the Goldendoodle! Teddy is not just a delightful companion; he's here to play a special role as our therapy dog, visiting our school once a week.

Before Teddy begins his regular visits, he will be doing a series of trial visits to become acclimated to our school environment. This will ensure he's comfortable and ready to interact positively with our students and staff.

Teddy has completed an extensive training program, preparing him to be an effective and gentle therapy dog. His presence is part of our commitment to fostering a nurturing and supportive atmosphere at our school.

For those concerned about allergies, Teddy is a hypoallergenic dog, making his companionship accessible to everyone in our community.

A trained handler will always accompany Teddy, ensuring that all interactions are safe, controlled, and beneficial for our students. This handler's presence is crucial in maintaining a secure environment for both Teddy and our students.

The introduction of a therapy dog like Teddy to a school setting offers numerous benefits. From reducing stress and anxiety to enhancing the overall learning environment, Teddy's presence is sure to have a positive impact. He will help in developing empathy, boosting social skills, and providing emotional support to anyone in need.

We are eager for you to meet Teddy and witness the wonderful ways he will contribute to making Hutton Elementary an even more welcoming and inclusive place.



**Thank you, Mrs. Valley, for compiling all our feathers to make the beautiful wings!**

**Some of our 5th Grade Leadership Team students are pictured here with the wings.**

**Hutton Hawks Soar Together!**

**National Native American**



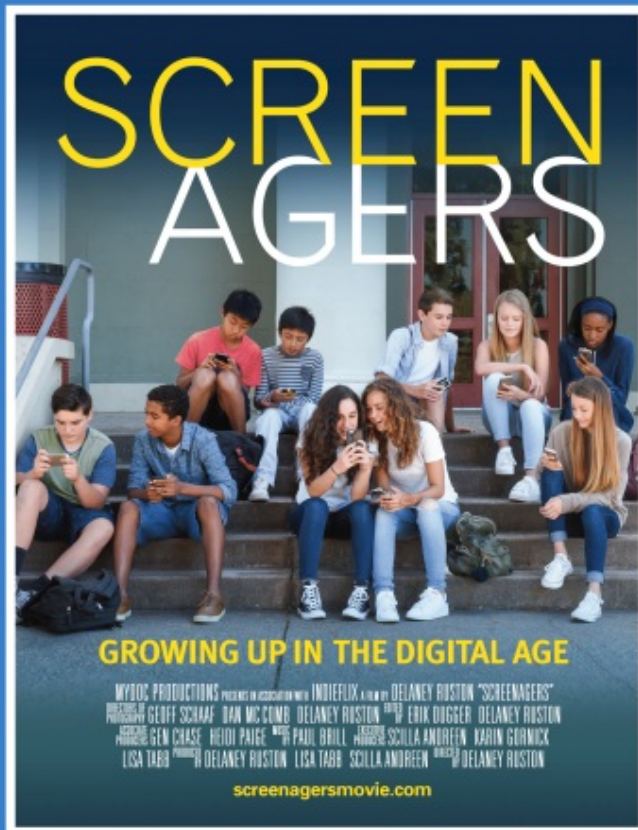


## Heritage Month November 1-30

As we enter November, we embrace National Native American Heritage Month with great reverence at Hutton Elementary. This is a time for all members of our school community - parents, staff, and students - to come together

and honor the rich and diverse cultures, histories, and contributions of Native Americans. Spokane, with its deep Native American history, serves as a unique backdrop for this observance. Throughout the year, we will engage in educational activities that deepen our understanding of Indigenous traditions, art, and the enduring wisdom they bring to our world. Let us join hands in fostering an environment of respect, inclusion, and unity as we recognize and appreciate the invaluable heritage of Native Americans.

# LEWIS AND CLARK HIGH SCHOOL PRESENTS:



**"SCREENAGERS"**  
THE FIRST DOCUMENTARY  
OF A THREE PART  
SERIES THAT EXPLORES THE  
IMPACT OF **SCREEN  
TECHNOLOGY**  
ON KIDS AND OFFERS  
**PARENTS AND  
FAMILIES PROVEN  
SOLUTIONS THAT WORK**

## From Cubs to Tigers: An LC Feeder School Event



**MONDAY NOVEMBER 20, 2023**  
**5:30-7:00PM LC COMMONS**  
**FREE PIZZA AND LC SWAG PRIZE RAFFLES**

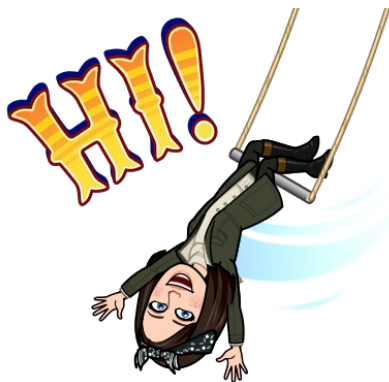
**Our Amazing Students**



## Enjoy the Process - Art with Mrs. Malm

We have 12 students in Mrs. Malm's after school Process Art class. **Enjoy the Process** focuses on all different types of process art including painting, drawing, sculpting, collage, and more! "Process Art is art that is child-directed, choice-driven, and celebrates the experience of discovery. In process art, the final product is always unique, and the focus lies in the creation of the work, not the outcome" (Tinker Lab). The goal for "Enjoy the Process" is to give students the opportunity to experiment, with art, in a nonjudgmental environment, that is full of choice. Ready, set, create!

## Counselor's Corner



### From Mrs. Snider

Want to be "in the know" about the happenings at Hutton? check out my Counselor's Corner. I will have all the *things* about SEL, what is happening in the classroom with my lessons, school-wide activities, ideas for home and more.

**Mrs. Snider's Counseling  
Corner**



# Hutton PBIS - Together We Can!

Hutton is a **PBIS School (Positive Behavior Intervention School)**. We believe that providing students with clear, consistent expectations followed by positive reinforcements leads to a positive, safe learning environment for all. We recognize that students must be explicitly taught expectations and be given many opportunities to practice them. Classrooms will learn and practice each set of expectations in a variety of locations within the building.

### We have a "Nest" system here at Hutton to help support PBIS.

- Each set of AVID buddies will be grouped with two other sets making a total of six classrooms across a variety of grade levels.
- Each set of six classrooms will be known as a "Nest."
- Each "Nest" will function as a team earning points collectively from the Hutton "Hawk Eyes" or specialists and administration.
- Each "Nest" will flock together to celebrate when quarterly goals are met. This is called a Kettle Assembly.

### Why a Nest System?

- The nest system is a proven way to provide a positive climate and culture for students and staff.
- It provides a built-in place in the classroom, in the nest, and in the school community for every student to be a part of something and belong.
- Each nest creates a smaller, more connected community across grade levels fostering relationships inside and outside of individual classrooms.
- The model is visual and motivating inspiring hawks to take flight using experiential rewards.
- The structure encourages classrooms to work as teams and strengthen and celebrate as a Hawk Flock.
- The nest system embeds opportunities for fourth and fifth grade hawks to rise and lead by example.

## Hutton Nest System

**Red-Tailed Hawk**  
Nickname: "Tail Feathers"  
Tail Feathers Classrooms:  
Malm, Schulte, Heaton,  
Hallett, Campbell, Duchesne



**Sharp Shinned Hawk**  
Nick Name: "Sharplies"  
Sharplies Classrooms:  
Iverson, Gurash, Lipsker,  
Yahne, Griffus, Crawford



**Swainson's Hawk**

Nick Name: "Swains"

Swain Classrooms:  
Swim, Muelheims, Pedersen,  
Freel, Day, Nye




**Rough-Legged Hawk**


Nick Name: "Leggies"

Leggies Classrooms  
McCarthy, Fernandez, Dhaenens,  
Griffith, Scribner, Paino



When we have "Wear Your Nest Color Hutton Friday Spirit Day", students wear the color of their nest.  
**Hutton Hawks Soar Together**

# HUTTON



## ELEMENTARY

### PARENT HANDBOOK

*Home of the Hawks*



## ***Morning Arrival, Breakfast and More!***

Students who are not eating breakfast at school are **allowed on campus beginning at 8:15 AM.** Students line up in their designated line up spot (See MAP Below) and are picked up by their teachers and walked into the building. Dismissal doors at the end of the day



are the same; EXCEPT FOR... Mrs. Campbell, Mrs. Lipsker, Mrs. Pedersen, and Mrs. Dhaenens. These four classrooms dismiss to the parent loop through the SW door.

Students wishing to eat breakfast may arrive on campus to eat after 8:00 AM. Breakfast eaters will enter into the cafeteria through the blacktop doors and eat inside the cafeteria. \*Mondays are professional collaboration days and school does not start until 9:30 AM, so breakfast would begin at 9:00 AM. Breakfast is made available to all students up to 10:00 AM.

**Students need to head directly home after school as the playground is open only to students in Express.**

## IMPORTANT INFORMATION

Parents, please remember that we are a **Single Point of Entry**. **ALL visitors need to report to the office** to enter the school building. **Please do not enter the school with your child for breakfast through the MPR doors on the black top.**

**Please be aware of the daily forecast and remember to send your child to school with the appropriate clothing.**



## Lost and Found

Is your child missing their jacket, hat, gloves or water bottle? Our Lost and Found is overflowing! If you are missing an item, please come and check to see if our closet has your item. **Items are on display in front of the office next week. Please come claim your child's item! Items left will be taken for donation during Thanksgiving Break.**

## Lunch and Recess

Do you need to know what time your child is going to recess and eating lunch? Please [click here](#) for the



## ***Ala Carte Lunch Items Reminder***

**Substitute Spoon and Tilly Toothbrush** here to remind you that parents can deposit money for ala carte items into your student's meal account quickly and easily at [myschoolbucks.com](https://myschoolbucks.com). You can also view your child's meal account information and get low balance reminders even if you do not make a deposit online.

**Super (extra entrée)- \$2**

**Capri Suns - \$1**

**Fruit Snacks - \$0.50**

**Milk for cold lunch students - \$1**

Cash may also be sent to school with your student, but it **must be received in the office each morning**. Students **may not bring cash to be accepted during lunch** to pay for ala carte items.



## **WE ARE HIRING!!**

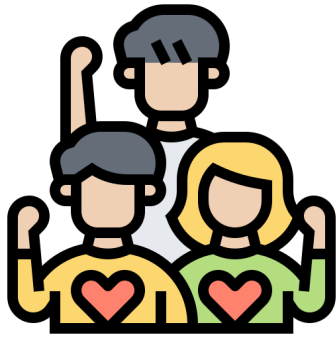
**NOW ACCEPTING APPLICATIONS FOR CROSSING GUARDS  
AND NOON SUPERVISION FOR THE 2023-24 SCHOOL  
YEAR!!!**

Hutton is now accepting applications for the 2023-2024 school year to serve as morning and afternoon crossing patrol guards, as well as for the lunchroom and playground supervision during the noon hour. Even if you only have 2 or 3 days per week of availability, consider applying. If you know a neighbor or friend who might be interested, please encourage them to apply as well.

**The hourly wage for these positions is \$16.24.** It is a great way to get outdoors, interact with students and become more involved in the school that your child or children attend. For more information, please stop by the office or call 354-3030 between the hours of 7:30AM- 8:00AM.



## **Volunteering at Hutton**



Parents, if you would like to help out for field trips or in the classroom, all volunteers must have **DISTRICT CLEARANCE**. Please [click here for an application](#). The process for clearance takes about 1.5 weeks so please plan accordingly. If you have been cleared in previous years, please disregard. Thank you!

## From the Nurse

As cold and flu season is upon us, please consider these health guidelines before you send your child to school.

[When to Keep Your Student Home From School](#)



**Hearing and Vision Health Screening is  
Tuesday, December 12th for grades K, 1, 2, 3 and 5.**



Earning Money for Hutton is Easy!

How to Earn  
[Box Tops for Education](#)

READY TO START EARNING FOR HUTTON? [GET THE BOX TOPS APP TODAY!](#)

**It's as easy as scanning your receipts!**

## The PTG Scoop

## Staff Appreciation Breakfast

Show our staff how much you love them by



[signing up for our Staff Appreciation breakfast](#)  
on **Monday, November 20th**. Sign up for  
foods/drinks, or send money to purchase coffee!



## Chess Club

This year, **Chess Club is running Jan 10-Feb 28**, Wednesdays, from 3-4pm and is open to grades 1-5. It is a fun way for your child to learn chess and a great indoor activity for winter. The program cost is \$90 and the PTG offers scholarships. There is an activity bus available for transportation home if needed. **Registration is open** and closes December 22. [Click here to register](#).

[Hutton PTG Website](#)

[Hutton PTG on Facebook](#)

[Hutton PTG on Instagram](#)

[Hutton PTG Meeting Zoom Link](#)

Email for more information at [huttonptg@gmail.com](mailto:huttonptg@gmail.com).

## District News



## HEART Gift Card Drive

Every winter, SPS holds a gift card drive to support unaccompanied youth in our [Homeless Education and Resource Team](#) (HEART) program.

HEART supports SPS students who lack a fixed, regular, and adequate nighttime residence. As of Nov. 14, 2023, there are 968 identified HEART students; 235 are

unaccompanied youth, across grades K-12, who are not in the physical custody of a legal parent/guardian.

Since unaccompanied youth sometimes cannot access resources available to guardian-accompanied youth, SPS collects gift cards to distribute to these students before Winter Break. With gift cards, HEART students can purchase a variety of items of their choosing, and HEART staff enjoy matching up students with gift cards to provide them with extra support and care over Winter Break.

This year's drive is Nov. 15 - Dec. 11. Here's how you can support:

- Drop off or mail gift cards to the SPS administration building (200 N. Bernard St.,

Spokane WA, 99201, c/o Communications Dept)

- Drop off gift cards to any of our 57 school building offices
- Donate to the HEART Trust online at [spokaneschools.org/supportHEART](https://spokaneschools.org/supportHEART)

Share this information about the HEART Gift Card Drive with your community! If you would like to learn more about how you can get involved, please send us a message on [Let's Talk](#).

Thank you.

Spokane Public Schools

## Do you have a future kindergarten student at home?

SPS is launching a new e-newsletter focused on preparing for kindergarten. Sign up here



([https://spokanesd.qualtrics.com/jfe/form/SV\\_a9kDs7HjP5H3xeS](https://spokanesd.qualtrics.com/jfe/form/SV_a9kDs7HjP5H3xeS)) to receive periodic updates from the district as you prepare your child for their early learning journey. Updates may include tips on ensuring your child is ready for kindergarten, a list of what you need for kindergarten registration, scenes from kindergarten classrooms, and much more.



## Coffee and Ice Cream

Enjoy conversations and ice cream with SPS Administrators or conversations and coffee with SPS Leaders. Click links below for dates.

[Ice Cream with SPS](#)

[Coffee with SPS](#)

## SPOKANE PUBLIC SCHOOLS CALENDAR 2023-24

## AUGUST

MON	TUE	WED	THUR	FRI
	1	2	3	4
7	8	9	10	11
14	15	16	17	18
21	22	23	24	25
♦28	♦29	♦30	31	

## SEPTEMBER

MON	TUE	WED	THUR	FRI
				1
4	5	6	7	8
11	12	13	14	15
18	19	20	21	22
25	26	27	28	29

## OCTOBER

MON	TUE	WED	THUR	FRI
2	3	4	5	6
9	10	11	12	♦13
16	17	18	19	20
23	24	25	26	27
30	31			

## NOVEMBER

MON	TUE	WED	THUR	FRI
		1	2	3
6	7	8	9	10
13	14	15	16	17
20	21	22	23	24
27	28	29	30	

## DECEMBER

MON	TUE	WED	THUR	FRI
				1
4	5	6	7	8
11	12	13	14	15
18	19	20	21	22
25	26	27	28	29

## JANUARY

MON	TUE	WED	THUR	FRI
1	2	3	4	5
8	9	10	11	12
15	16	17	18	19
22	23	24	25	26
29	30	31		

## SIGNIFICANT DATES

August 28 - 30..... Teacher Work Day / Prof. Learn. Imp. Day  
 August 31 - September 1 ..... K-12 Launch Conferences  
 September 4 ..... Labor Day  
 September 5 ..... First Day of Classes (1st through 12th)  
 September 6 ..... First Day of Kindergarten (A/B Rotation)  
 September 12.....First Day of All Kindergarten Together  
 September 25 ..... First Day for School Day Preschool (PK)  
 September 26 ..... First Day for AM/PM & CIP PK  
 October 13.....Prof. Learn. Imp. Day / Non Student Day  
 November 10 ..... Veterans Day  
 November 22-24 ..... Thanksgiving Break  
 December 25 - January 5 ..... Winter Break  
 January 15 ..... MLK Day  
 January 25-26 ..... Elem. Progress Conf. / Elem. Non Student Day  
 February 2 ..... Semester Break-Day / Non Student Day  
 February 19 ..... President's Day  
 February 20 ..... Prof. Learn. Imp. Day / Non Student Day  
 March 15 ..... Weather Make Up Day / Non Student Day  
 April 1-5 ..... Spring Break  
 May 27 ..... Memorial Day  
 June 7 ..... Last Day for AM/PM & CIP PK  
 June 11 ..... Last Day for School Day PK  
 June 14 ..... Last Day of School  
 June 17, 18 ..... Weather Make Up Days (if needed)  
 June 19 ..... Juneteenth

### Elementary Grading Periods

February 1 ..... End of First Semester  
 June 14 ..... End of Second Semester

### Elementary Reporting

#### First Grading Period

February 16 ..... Report Cards

#### Second Grading Period

June 14 ..... Report Cards

### Secondary Grading Periods

November 7 ..... End of First Quarter  
 February 1 ..... End of First Semester  
 April 12 ..... End of Third Quarter  
 June 14 ..... End of Second Semester

### Secondary Reporting

November 15 ..... First Quarter Report Cards  
 February 9 ..... First Semester Report Cards  
 April 19 ..... Third Quarter Report Cards  
 June 17 ..... Second Semester Report Cards

## FEBRUARY

MON	TUE	WED	THUR	FRI
			1	2
5	6	7	8	9
12	13	14	15	16
19	♦20	21	22	23
26	27	28	29	

## MARCH

MON	TUE	WED	THUR	FRI
				1
4	5	6	7	8
11	12	13	14	★15
18	19	20	21	22
25	26	27	28	29

## APRIL

MON	TUE	WED	THUR	FRI
1	2	3	4	5
8	9	10	11	12
15	16	17	18	19
22	23	24	25	26
29	30			

## MAY

MON	TUE	WED	THUR	FRI
		1	2	3
6	7	8	9	10
13	14	15	16	17
20	21	22	23	24
27	28	29	30	31

## JUNE

MON	TUE	WED	THUR	FRI
3	4	5	6	7
10	11	12	13	14
★17	★18	19	20	21
24	25	26	27	28

### LEGEND

- First/Last day of School
- Late Start/Collaboration
- Holiday
- No School/School Break Day
- Conferences
- ♦ Teacher Workday/Prof. Learn. Imp. Day
- ★ Weather/Emergency Makeup Day

# 2023-2024 SPS Calendar



Spokane Public Schools  
excellence for everyone





Follow Hutton Elementary on Facebook and  
checkout our website!

[Hutton  
Website](#)

Thank you to our sponsors!  
We appreciate you.



**ROSAUERS**  
SUPERMARKETS, INC.



**CARUSO'S**  
SANDWICHES & ARTISAN PIZZA  
"ONLY FRESH"



*latah bistro*



**DUTCH BROS**  
Coffee



Spokane Public Schools

[SPS  
Website](#)

[Unsubscribe kevind@spokaneschools.org](mailto:Unsubscribe%20kevind@spokaneschools.org)

[Update Profile](#) | [Constant Contact Data Notice](#)

Sent by heatherah@spokaneschools.org powered by



Try email marketing for free today!